

# Technical data sheet

Battery motor FBM-B 3100 for COMBIFLUX pump FP 314



More than just pumps

## Battery motor FBM-B 3100



### Special features:

- ▶ Motor is protected against medium steam by double-walled construction
- ▶ Speed controlled by micro-processor
- ▶ Electronic temperature control
- ▶ Anti-lock system
- ▶ Overload protection
- ▶ Battery is protected by automatic switch-off if the battery is empty
- ▶ Soft start

Motor type	Storage of motor	Nominal power [W]	Speed [rpm]	Speed control	Allowed ambient temperature in operation	Allowed ambient temperature on storage	Max. viscosity [cPs]	Protection class (with protection cover)	Weight motor with battery and protection cover
brushless	ball bearing	100	5,000 - 15,000	stepless speed adjustment	32 - 104°F (0 - 40°C)	-4 - 140°F (-20 - 60°C)	250	IP 44	2.6 lbs (1.2 kg)

## Battery B15-3100



### Special features:

- ▶ Overload protection of individual cells
- ▶ Deep discharge protection of individual cells
- ▶ Short-circuit fuse
- ▶ Overcurrent protection
- ▶ Sleep mode

Type	Nominal voltage [V]	Nominal capacity [Ah]	Allowed ambient temperature in operation	Optimal ambient temperature on storage	Allowed ambient temperature on storage	Dimensions [mm] l x w x h	Weight
Li-ions	18	1.5	32 - 104°F (0 - 40°C)	32 - 50°F (0 - 10°C)	-4 - 140°F (-20 - 60°C)	115 x 75 x 46	.75 lbs (350 g)

## Charger BCH-3100



### Special features:

- ▶ Fast charger
- ▶ Electronic temperature control
- ▶ Reverse-polarity protection
- ▶ Defective battery detection
- ▶ Microprocessor-controlled charging
- ▶ LED status display

Nominal voltage [V]	Power frequency [Hz]	Charging time [min]	Allowed temperature loading range	Allowed ambient temperature on storage	Insulation class of transformer	Protection class	Cable length	Type of plug	Dimensions [mm] l x w x h	Weight
220-240 100-120	50-60	30	41 - 104°F (5 - 40°C)	-4 - 140°F (-20 - 60°C)	T40/E	IP 30	6.5 ft (2 m)	CEE 7/16 NEMA 1-15 P	152 x 86 x 92	1.1 lbs (500 g)

# Technical data

## COMBIFLUX pump FP 314 with battery motor FBM-B 3100

### COMBIFLUX pump FP 314



Type	FP 314 PVDF-25/19	FP 314 PP-25/19	FP 314 PP-32/25	FP 314 S-28/25
Type of seal	Sealless			
Immersion length	20", 27", 39" (500/700/1000 mm)		20", 27", 39", 47" (500/700/1000/1200 mm)	
Outer Ø [mm]	25		32	28
Connection thread	G1 A*			G ¾ A
Materials in contact with the medium	PVDF, ETFE, PTFE/carbon, Hastelloy C	PP, ETFE, PTFE/carbon, Hastelloy C		Stainless steel (316 Ti), ETFE, PTFE/carbon
Viscosity max.	250 cPs			
Temperature of medium max.	140°F (60°C)	113°F (45°C)		140°F (60°C)
Weight at a length of 500/700/1000/1200 mm	0.7/0.7/0.9 lbs (0.3/0.3/0.4 kg)	0.7/0.7/0.9 lbs (0.3/0.3/0.4 kg)	0.7/0.7/0.9/1.3 lbs (0.3/0.3/0.4/0.6 kg)	2.2/2.4/3.3/4.2 lbs (1.0/1.1/1.5/1.9 kg)

\*Hose connections 1/2" (DN13) and 3/4" (DN19) included

### Battery motor FBM-B 3100 (18 V; 1.5 Ah) with COMBIFLUX pump FP 314

#### Performance data

Speed	Delivery rate Q max. at:		Delivery head H max. ** at:		Total quantity max. with one battery charge at:		Battery runtime [min]* with one battery charge at:	
	5000 rpm	15000 rpm	5000 rpm	15000 rpm	5000 rpm	15000 rpm	5000 rpm	15000 rpm
FP 314 PP/PVDF-25/19	3.2 GPM (12 LPM)	10 GPM (38 LPM)	1.3 ft (0.4 m)	16.4 ft (5 m)	369 Gal (1400 L)	200 Gal (760 L)	120	20
FP 314 PP-32/25	5.3 GPM (20 LPM)	14.2 GPM (54 LPM)	3.2 ft (1 m)	21.3 ft (6.5 m)	528 Gal (2000 L)	198 Gal (750 L)	100	14 <sup>1</sup>
FP 314 S-28/25	5.3 GPM (20 LPM)	15.8 GPM (60 LPM)	3.6 ft (1.1 m)	22.9 ft (7 m)	528 Gal (2000 L)	222 Gal (840 L)	100	14 <sup>1</sup>

<sup>1</sup> at length of 47" (1200 mm) 10 min

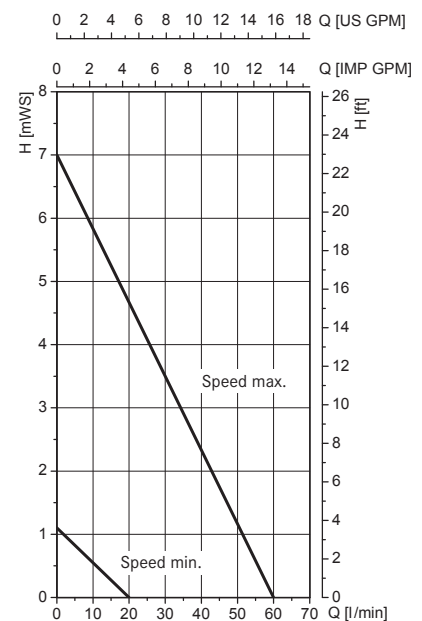
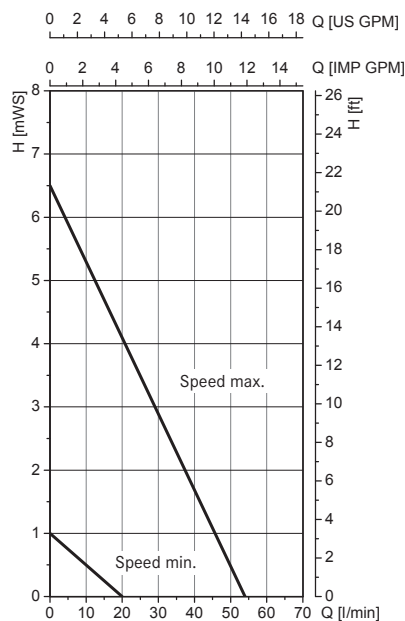
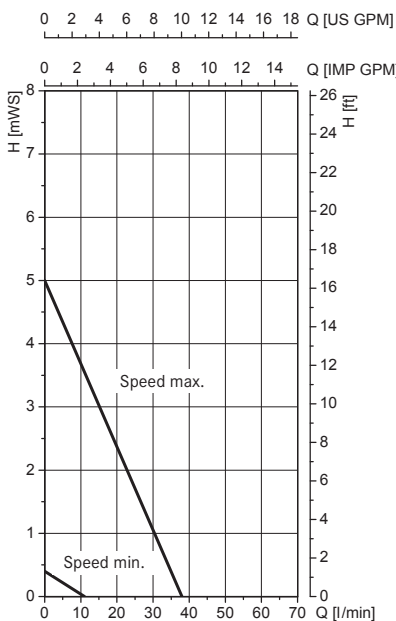
#### Performance charts\*

Battery motor FBM-B 3100 with COMBIFLUX pump:

FP 314 PP/PVDF-25/19

FP 314 PP-32/25

FP 314 S-28/25



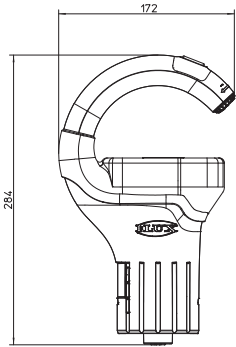
Speed min. 5000 rpm, speed max. 15000 rpm

\* Determined with water at 68°F (20°C), measured values ± 10 % maximum flow rate with open discharge outlet

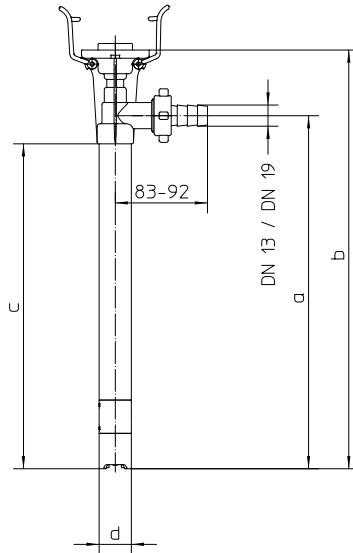
\*\* Measured with water at 68°F (20°C)

## Dimensions [mm]

### Battery motor FBM-B 3100



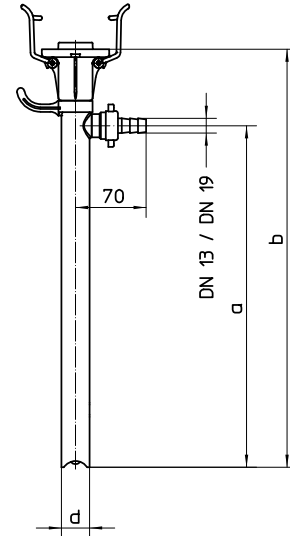
### FP 314 PP+PVDF without motor



Immersion length	a	b	c	d	
47" (1200 mm)	1200	1538	1172	Ø 32	
39" (1000 mm)	1000	1338	972		
27" (700 mm)	700	1038	672	Ø 25	Ø 32
20" (500 mm)	500	838	472		

Dimensions in mm

### FP 314 S without motor



Immersion length	a	b	d
47" (1200 mm)	1189	1538	Ø 28
39" (1000 mm)	989	1338	
27" (700 mm)	689	1038	
20" (500 mm)	489	838	

Dimensions in mm

## COMBIFLUX pump kits

Pump kit	FP 314 PP-25/19	FP 314 PP-32/25	FP 314 PP/S-32/25 AdBlue® version
Motor	Battery motor FBM-B 3100 18 V/ 1.500 mAh		
Charger	220-240 V/ 50-60 Hz		
Outer tube material	polypropylene		
Seal type	sealless		
Shaft material	Hastelloy C		stainless steel
Immersion length [mm]	27"/39" (700/ 1000 mm)	39" (1000 mm)	39" (1000 mm)
Outer Ø [mm]	25	32	
Hose connector	1/2" (DN13)	3/4" (DN19)	
Hose material	PVC		
Hose length [m]	5 ft (1.5 m)		6.5 ft (2 m)
Hose Ø	1/2" (DN13)	3/4" (DN19)	
Hand nozzle material/seal	PP/FKM		
Connection hand nozzle	1/2" (DN13)	3/4" (DN19)	
Hand nozzle outlet Ø [mm]	11	22	19
Weight [kg]	5.3/5.7 lbs (2.4/2.6 kg)	5.3 lbs (2.4 kg)	5.3 lbs (2.4 kg)

# Part numbers

COMBIFLUX FP 314 with battery motor FBM-B 3100 and accessories

## Battery motor FBM-B 3100 and accessories

Description	Part no.
FBM-B 3100 (Protection cover, battery, charger 220-240 V/50 - 60 Hz)	301 01 000
FBM-B 3100 (Protection cover, battery, charger 100-120 V/50 - 60 Hz)	301 01 003
FBM-B 3100 (Protection cover, battery, without charger)	301 01 001
Battery B15-3100	301 02 001
Protection cover for motor FBM-B 3100	301 02 005
Charger BCH-3100; 220-240 V/50 - 60 Hz	301 02 003
Charger BCH-3100; 100-120 V/50 - 60 Hz	301 02 004

## COMBIFLUX pump FP 314

Pump type	FP 314 PP-25/19	FP 314 PP-32/25	FP 314 PVDF-25/19	FP 314 S-28/25
	Part no.			
20" (500 mm)	314 45 905	314 46 905	314 65 905	314 26 905
27" (700 mm)	314 45 907	314 46 907	314 65 907	314 26 907
39" (1000 mm)	314 45 910	314 46 910	314 65 910	314 26 910
47" (1200 mm)	-	314 46 912	-	314 26 912

## COMBIFLUX pump kits with battery motor 220-240 V/50-60 Hz

Pump type	Immersion length	Outer ø [mm]	Part no.
FP 314 PP	27" (700 mm)	25	314 48 807
FP 314 PP	39" (1000 mm)	25	314 48 810
FP 314 PP	39" (1000 mm)	32	314 49 910
FP 314 PP/S AdBlue®	39" (1000 mm)	32	314 49 ZV2

### Other accessories:

We offer the appropriate accessories for the COMBIFLUX, such as: hand nozzles, hoses, compression glands or liquid meters.

See our brochure for accessories and the price list for the precise specifications.

### FLUX PUMPS CORPORATION

300 Townpark Drive, Suite 110  
 Kennesaw, GA 30144, USA  
 Phone 800-367-3589  
 info@fluxpumpsusa.com  
 www.fluxpumpsusa.com